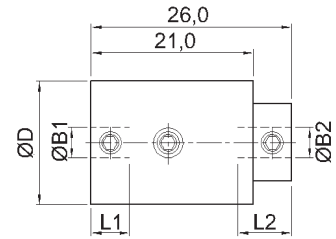


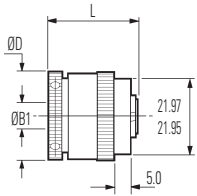
## Adjustable Friction Clutches



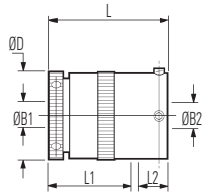
### Size 16 Set Screw Shaft Fixing



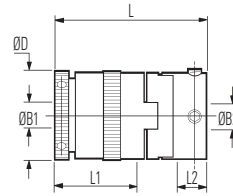
### Size 25 Set Screw Shaft Fixing



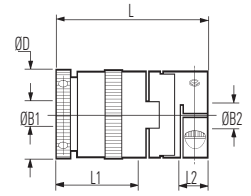
**Ref. 271** (2 plate)  
**279** (6 plate)  
Basic clutch (thro' bore)



**Ref. 273** (2 plate)  
**281** (6 plate)  
Basic clutch + sleeve adaptor

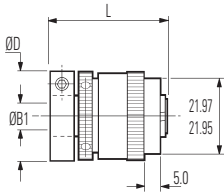


**Ref. 277** (2 plate)  
**285** (6 plate)  
Basic clutch + Oldham (set screw) coupling

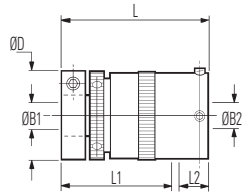


**Ref. 267** (2 plate)  
**269** (6 plate)  
Basic clutch + Oldham (clamp) coupling

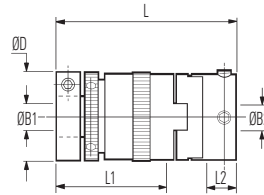
### Size 25 Clamp Shaft Fixing



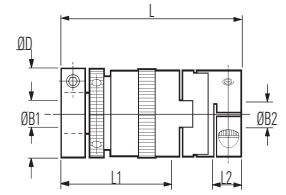
**Ref. 401** (2 plate)  
**409** (6 plate)  
Basic clutch (thro' bore)



**Ref. 403** (2 plate)  
**411** (6 plate)  
Basic clutch + sleeve adaptor

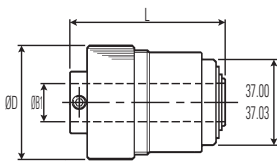


**Ref. 407** (2 plate)  
**415** (6 plate)  
Basic clutch + Oldham (set screw) coupling

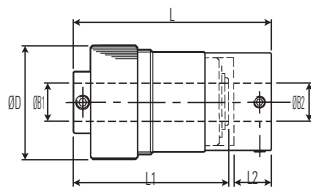


**Ref. 397** (2 plate)  
**399** (6 plate)  
Basic clutch + Oldham (clamp) coupling

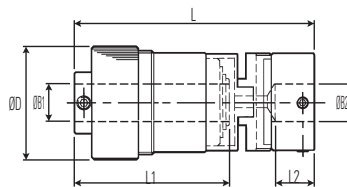
### Size 48 Set Screw Shaft Fixing



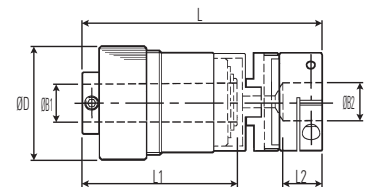
**Ref. 279**  
Basic Clutch (thro' bore)



**Ref. 281**  
Basic Clutch + sleeve adaptor



**Ref. 285**  
Basic Clutch + Oldham (set screw) coupling



**Ref. 269**  
Basic Clutch + Oldham (clamp) coupling

## Materials & Finishes

- Housing, adjuster ring, adaptors:** Al. Alloy 2014 T6  
Irridite NCP finish
- Hub:** Steel, heat treated
- Clutch plates:** Size 25 Steel, heat treated  
Size 48 Brass
- Bearings:** Sintered bronze
- Fasteners:** Alloy steel, black oiled