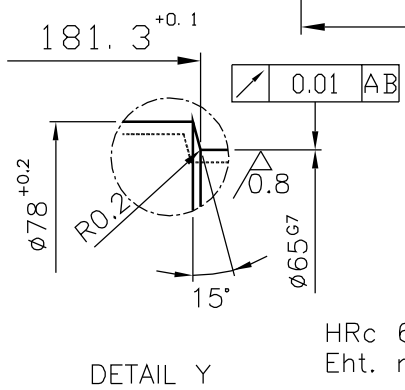
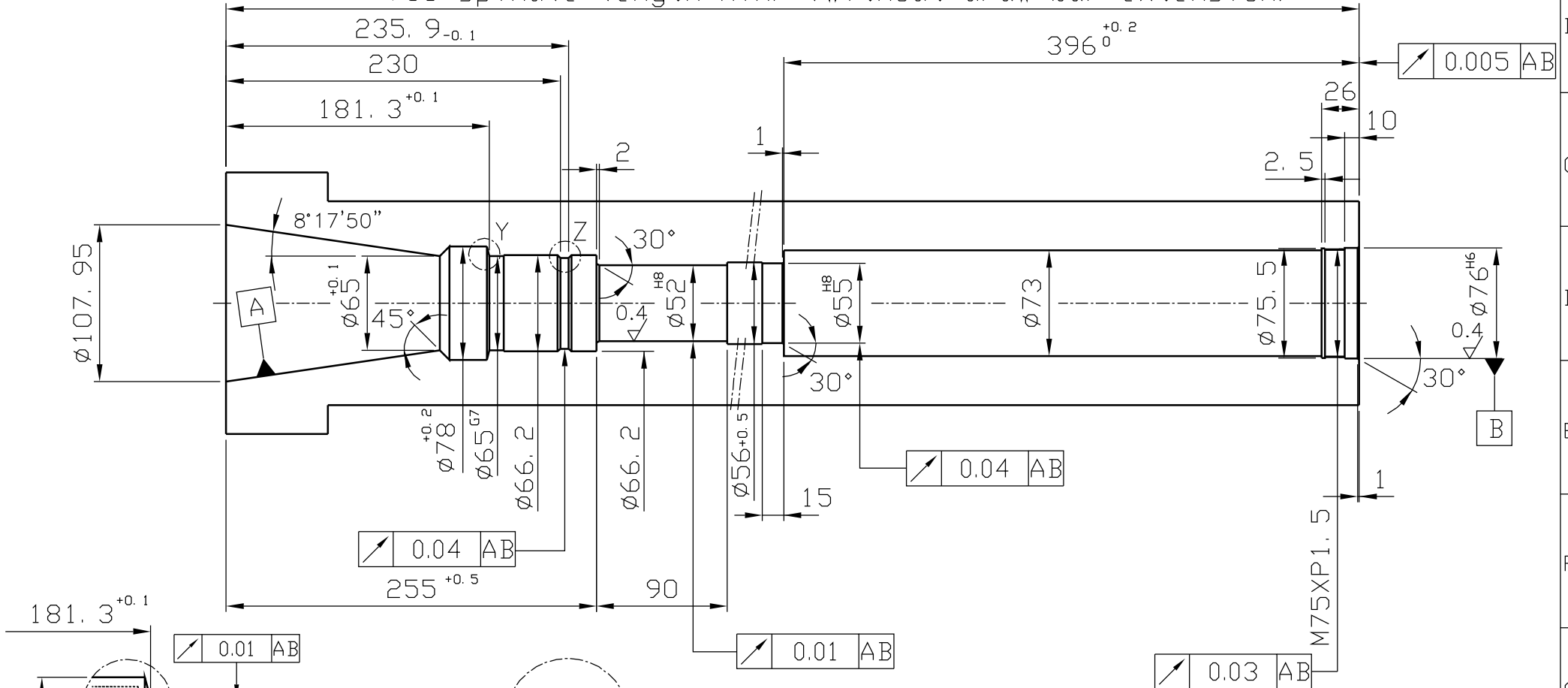
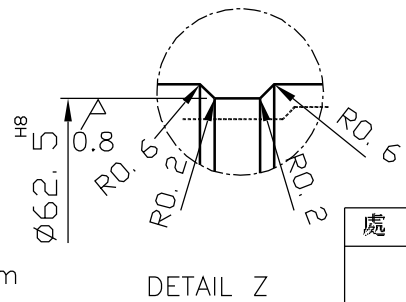


Spindle inside contour

858 spindle length min.
780 spindle length min. (without draw bar extension)



HRc 60±2°
Eht. min 1mm



<http://smartc.company>

銳角去除

| 處 理 | 備 註 | 材 質 | 硬 度 | 第三角法 | 比 例 | 台 件 | 設 計 | 日 期 |
|-----|----------|------|-----|------|---------------|-----|------|----------|
| | 60spin01 | | RC | | 1/4 | | H.J. | 08/05/02 |
| | | S.M. | | 圖 號 | 60 SPINDLE 01 | | | |

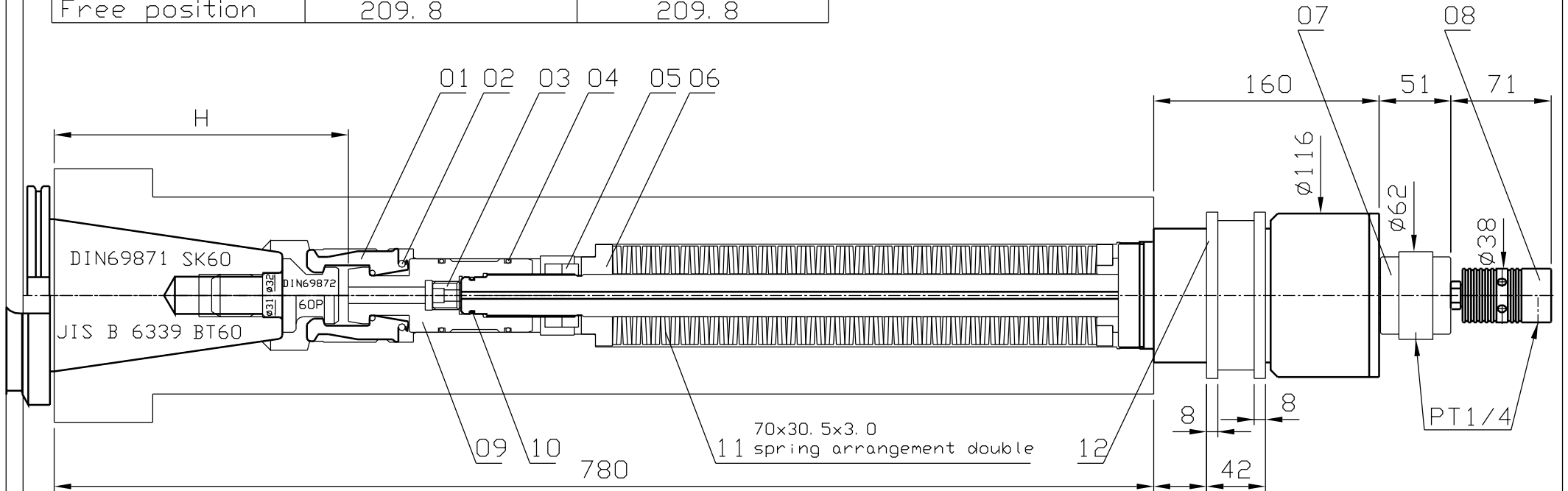
60PSTA/5800

60PS2010

Id. no.

Com. no.

| H | DIN 69871/69872 SK60 | JIS B 6339 BT60/60P |
|-------------------|----------------------|---------------------|
| Opening position | 200.5 | 200.5 |
| Clamping position | 208.8 | 208.8 |
| Free position | 209.8 | 209.8 |



Opening position 29.2
 Clamping position 37.5
 Free position 38.5

Spring pressure 18000 N
 Spring arrangement double
 Pull force 58000 N
 speed 6000 rpm
 opening force 60 bar (only when non-rotating)
 coolant lubrication max. 80 bar
 air max. 10bar
 total clamping stroke 9.3mm
 ejection stroke 1.3mm

<http://smarc.company>

S.M.

date

08/05/01